

Completed image



Example arrangement



You will need

- Scissors, glue, ruler, dried-up ballpoint pen, rounded pencil (or similar object)

Assembly tips

- Begin by placing the ruler against the fold lines and drawing the empty ballpoint pen over them so that it is easy to make clean folds.
- Shaping the stem by rounding it using the rounded pencil or similar object will make it easier to roll.

Lines and icons

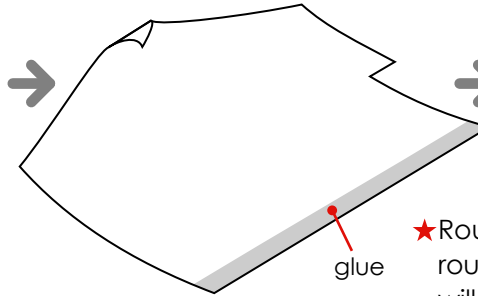
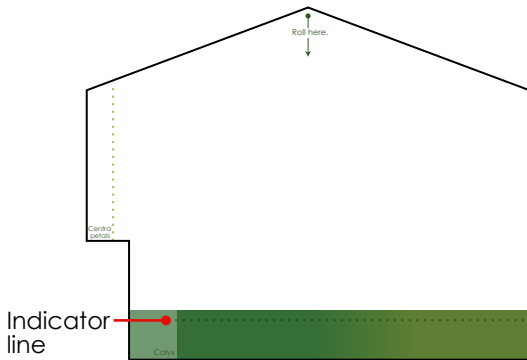
- Scissors line —————
- Mountain fold - - - - -
- Valley fold - - - - -
- Indicator line • • • • •
- Tips ★

Caution

- *Glue, scissors and other tools and materials may be harmful to children.
Please keep your work out of the reach of children.

1 Make the Stem

Cut the stem out along the scissors line and roll it tightly starting at "Roll here."

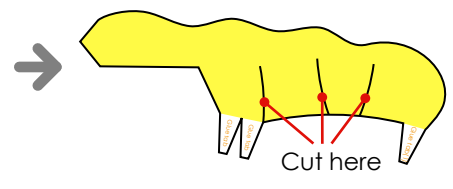
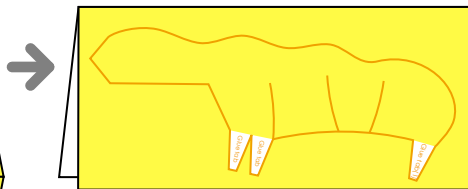
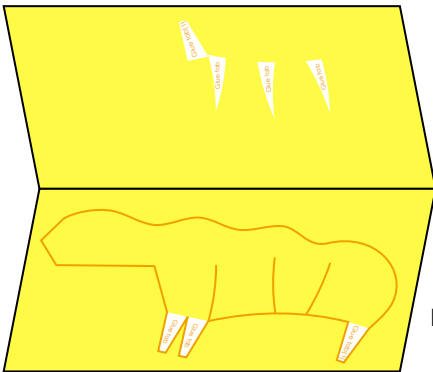


Adjust so that the indicator line is just hidden when completely rolled then glue in place.

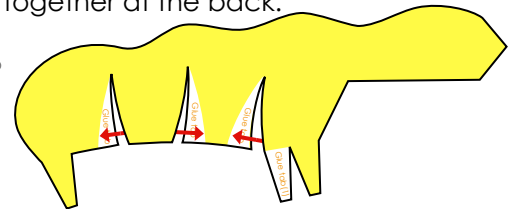
★ Rounding it first using the rounded pencil or similar object will make it easier to roll.

2 Attach the central petals to the stem

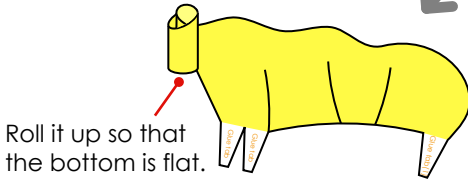
Follow the square border to cut out the central petals, fold the piece in half and glue it together, then cut out the petal shape.



Attach the glue tabs together at the back.



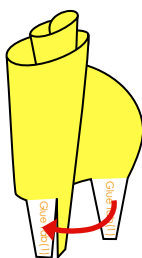
Roll it up tightly from the starting point.



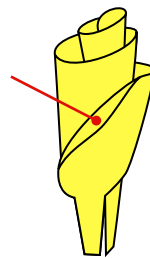
Roll it up so that the bottom is flat.

★ The petals should be indented when turned face up.

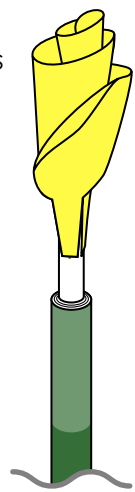
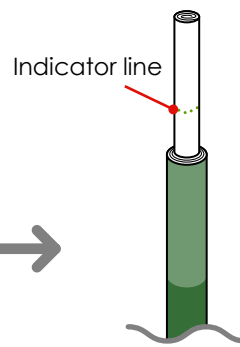
Roll up the remaining parts of the petals, and attach glue tab (1) to the glue tab (1) on the reverse side.



After finishing rolling, curve the final edge of the petal outwards.

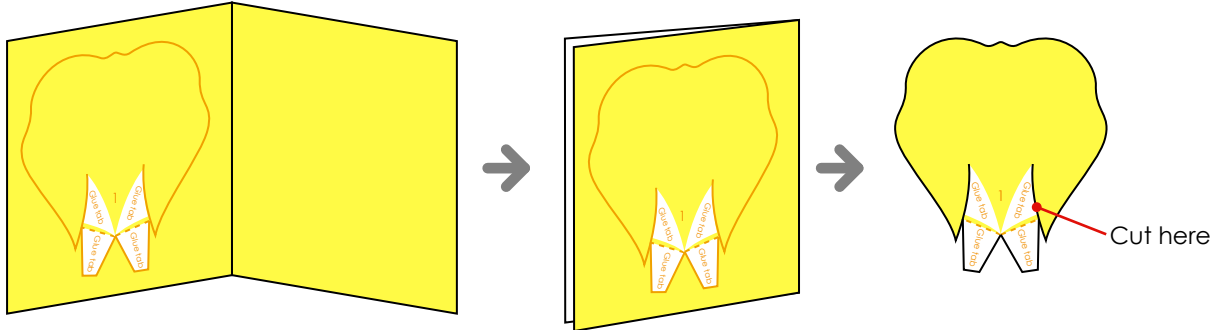


Glue the central petals to the top of the stem, above the guide line.

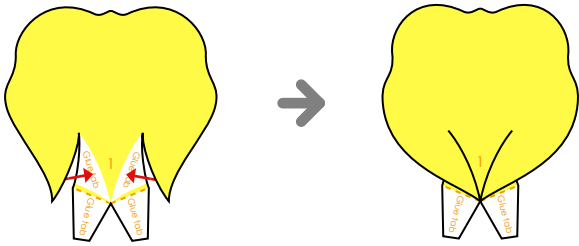


3 Make the Petals

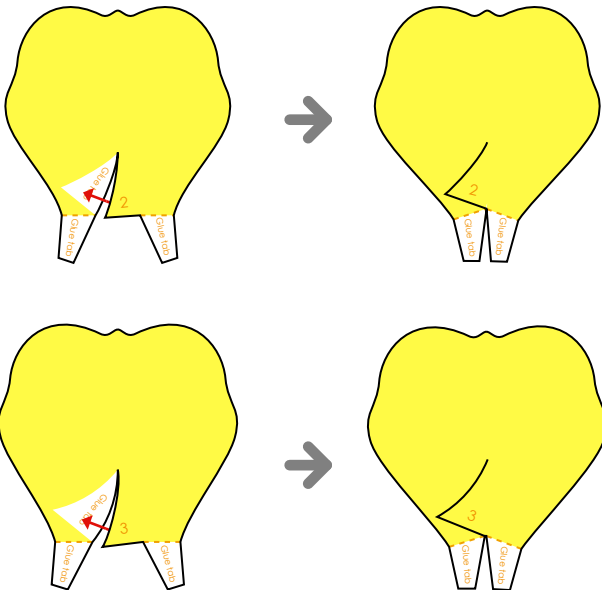
Follow the square border to cut out petal 1, fold the piece in half and glue it together, then cut out the petal shape.



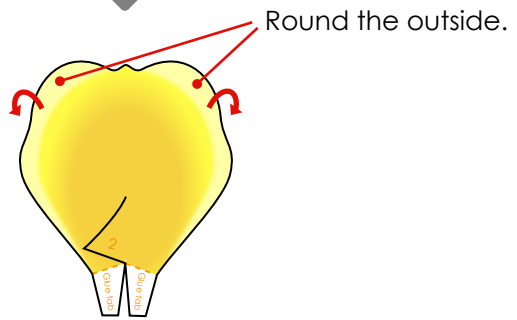
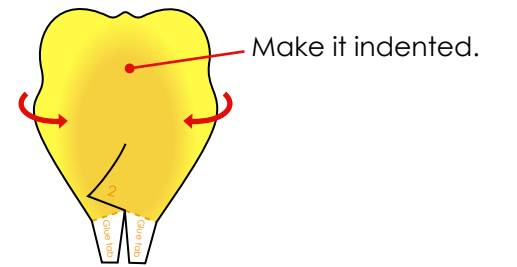
Attach the glue tabs together.



Cut out and glue petals 2 and 3 in the same way as you did for 1.



<Rounding the petals>

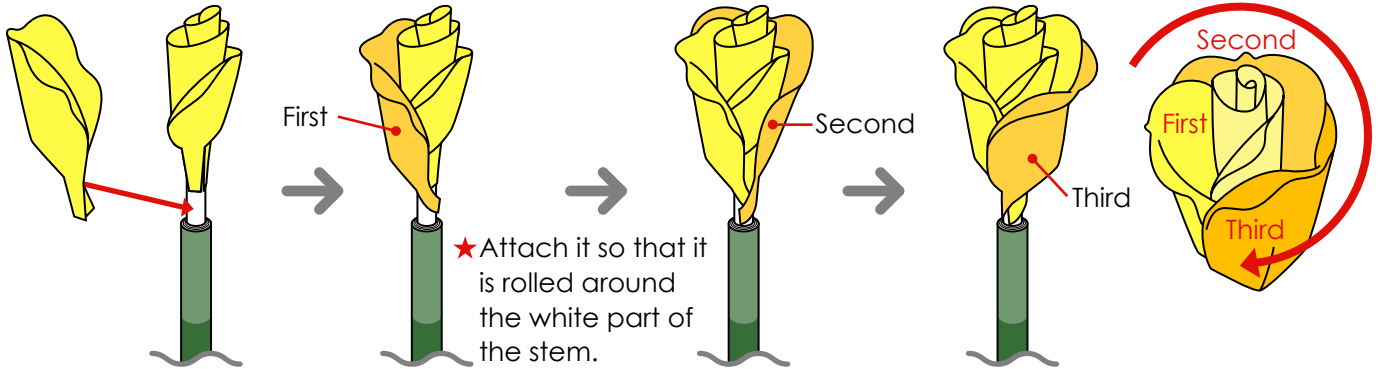


★ You can convey different stages of blooming by adjusting the amount of indent and curving.

4 Attach the petals to the stem

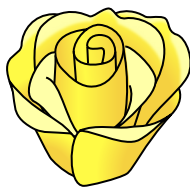
Beginning at the finishing point on the rolled central petals, attach the petals so they overlap each other by about a third.

Attach the second and third petals of petal 1, and petals 2 and 3, in the same way.



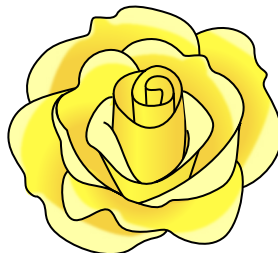
★ You can make roses of varying stages of blooming by adjusting the number of petals. This is recommended when arranging several roses together.

<Just started to unfurl>

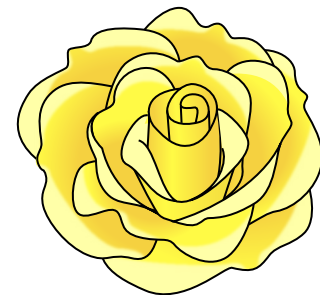


Petal 1:3 petals
Petal 2:3 petals

<Half open>



Petal 1:3 petals
Petal 2:2 petals
Petal 3:2 petals

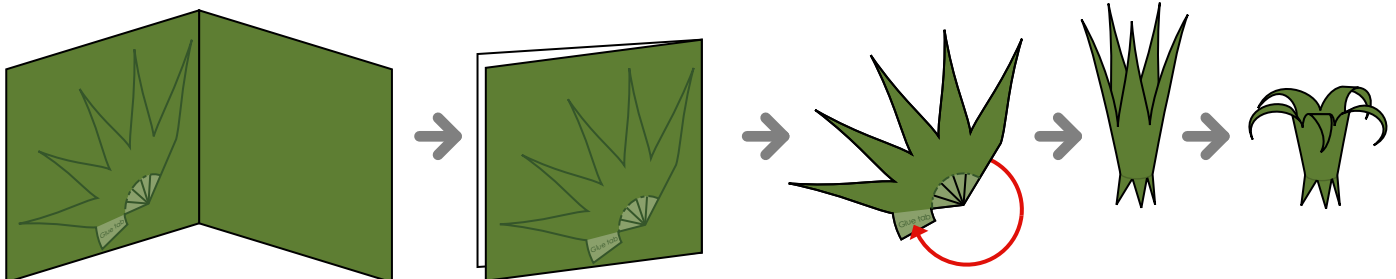


Petal 1:3 petals
Petal 2:3 petals
Petal 3:4 petals

5 Make the Calyx

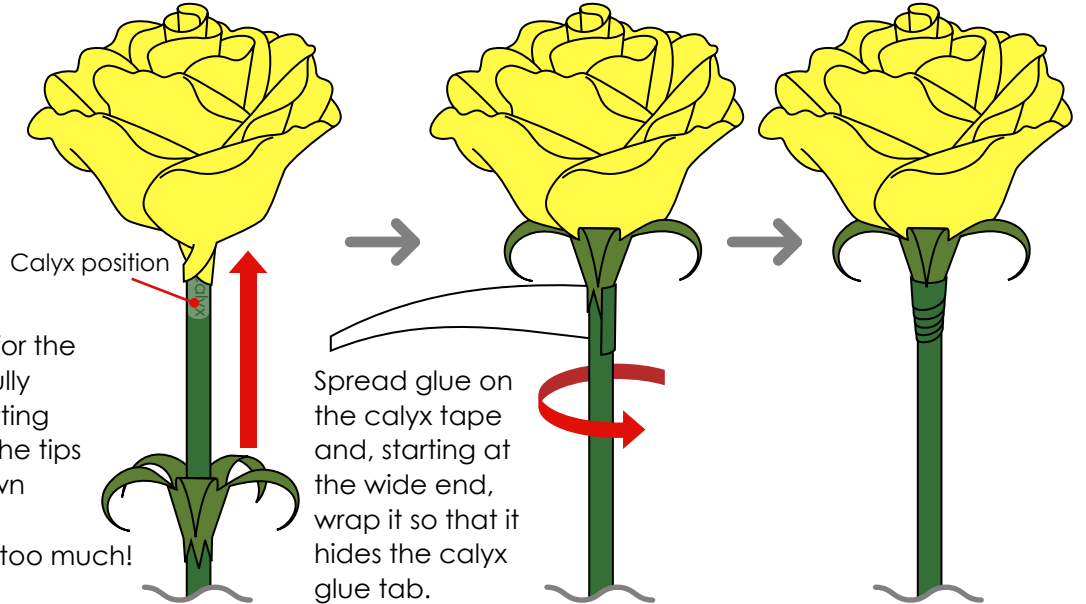
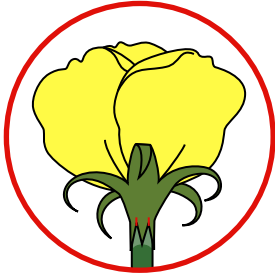
Cut along the square border containing the calyx then fold in half, glue in place and cut the calyx out.

Attach the glue tabs together and make it a cone shape, and curl the tips.



6 Attach the calyx

Slide the calyx onto the stem from the bottom, and push it up until it is right against the petals, then glue it in place at the triangular parts.

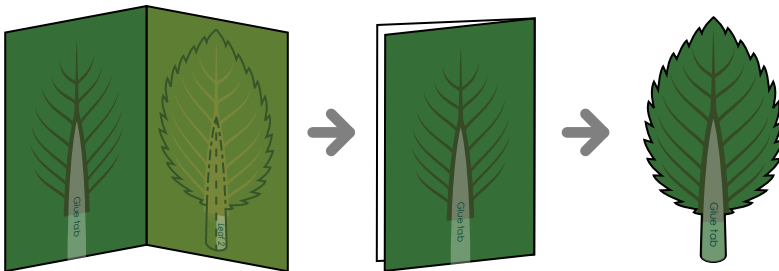


★ If the stem is too thick for the calyx to fit over, carefully adjust the calyx by cutting along the red lines at the tips of the triangles as shown above.

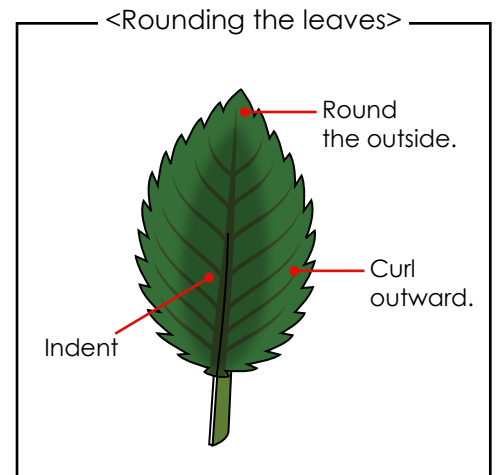
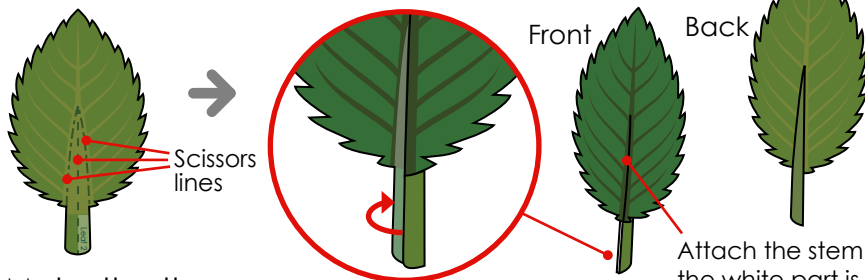
*Be careful not to cut too much!

7 Make leaves 2 and 3

Follow the square border to cut out leaves 2 and 3, fold the piece in half and glue it together, then cut out the leaf shapes.

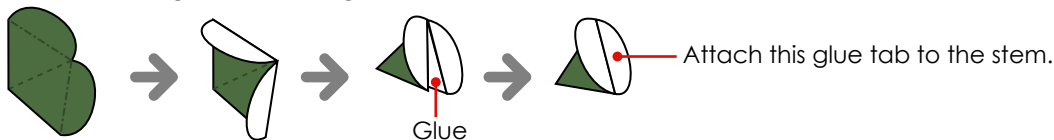


Fold along all the fold lines. Attach the glue tabs together.



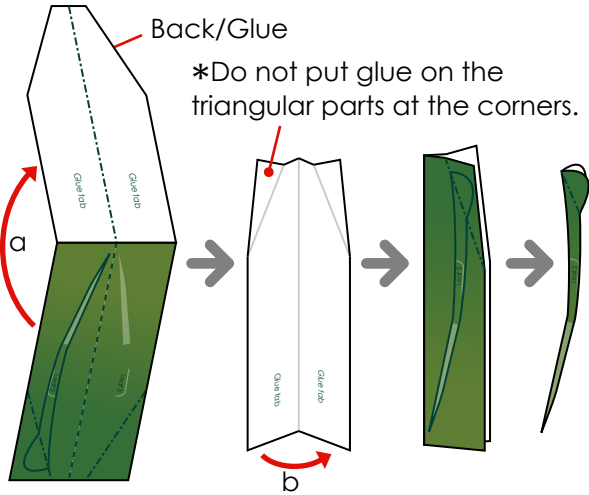
8 Make the thorn

Cut out the thorn along the scissors lines, and fold along all the fold lines. Glue the triangular parts together.

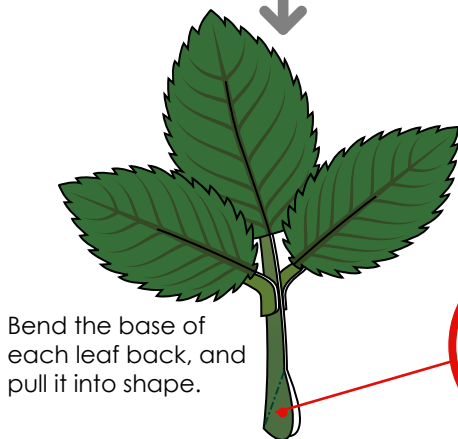
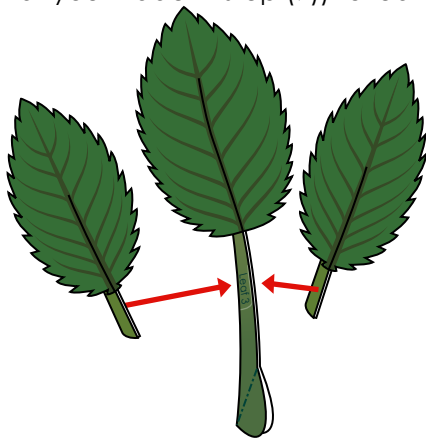


9 Make leaves and complete your rose

Follow the outer guide line to cut out the stem (for the leaves), fold it in half widthways (a), and glue it together. Next, fold it in half lengthways (b), glue the glue spots together, and cut out the stem according to its shape.



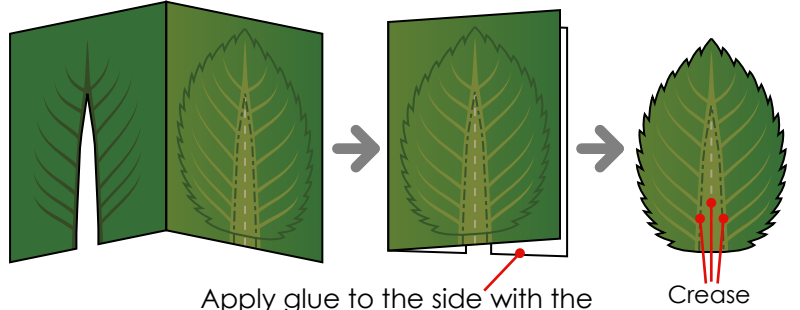
Attach leaves 2 and 3 (that you made in step (7)) to leaf 1.



Attach the glue spot shown below by enveloping it around the stem.

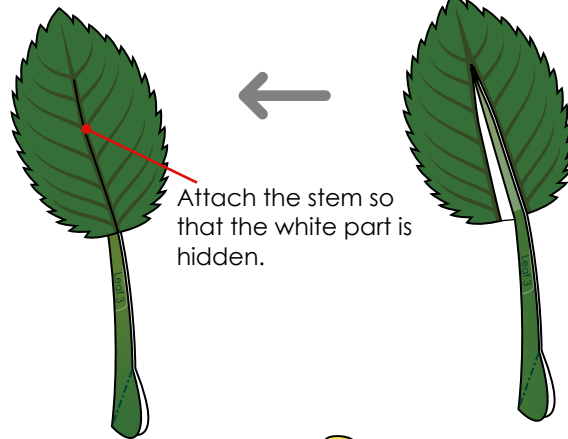


Follow the square border to cut out leaf 1, fold the piece in half and glue it together, then cut out the leaf shape.



Apply glue to the side with the slot cut out, and stick the two sides together.

Put glue on the white part of the leaf 1, envelop the stem in the central fold, and attach together.



Attach the stem so that the white part is hidden.

Add the leaves and thorns to your liking.

<Complete>

★ If arranging several roses or other flowers together, you will be able to make a nicer arrangement if you decide the leaves' and thorns positions after deciding the combination of flowers.

